

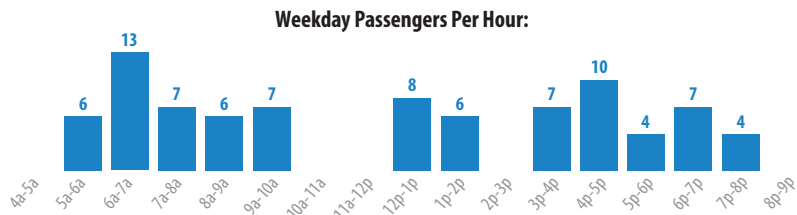


**SERVICE PATTERNS:** All service operates along a consistent alignment from the River Cities Travel Center to Hensley Road, primarily along Arkansas 365. There are opportunities to transfer to Route 6 at Roosevelt and Springer.

**SCHEDULE:** Service operates on weekdays and Saturdays.

	Span of Service	Typical Headway (minutes)	One-Way Trips
<b>Weekdays</b>	5:50 a.m.-7:47 p.m.		39
Early AM	Before 6:15 a.m.	35	2
AM Peak	6:15-8:15 a.m.	40	6
Midday	8:15 a.m.-3:15 p.m.	40	21
PM Peak	3:15-6:15 p.m.	48	8
Evening/Night	6:15 p.m. and Later	—	2
<b>Saturdays</b>	5:50 a.m.-6:39 p.m.	40	39
<b>Sundays</b>	—	—	—

**RIDERSHIP:** Route 19 has relatively weak ridership, with 101 passengers per weekday.



Represents weekday ridership from Nov. 1, 2016 to April 30, 2017.

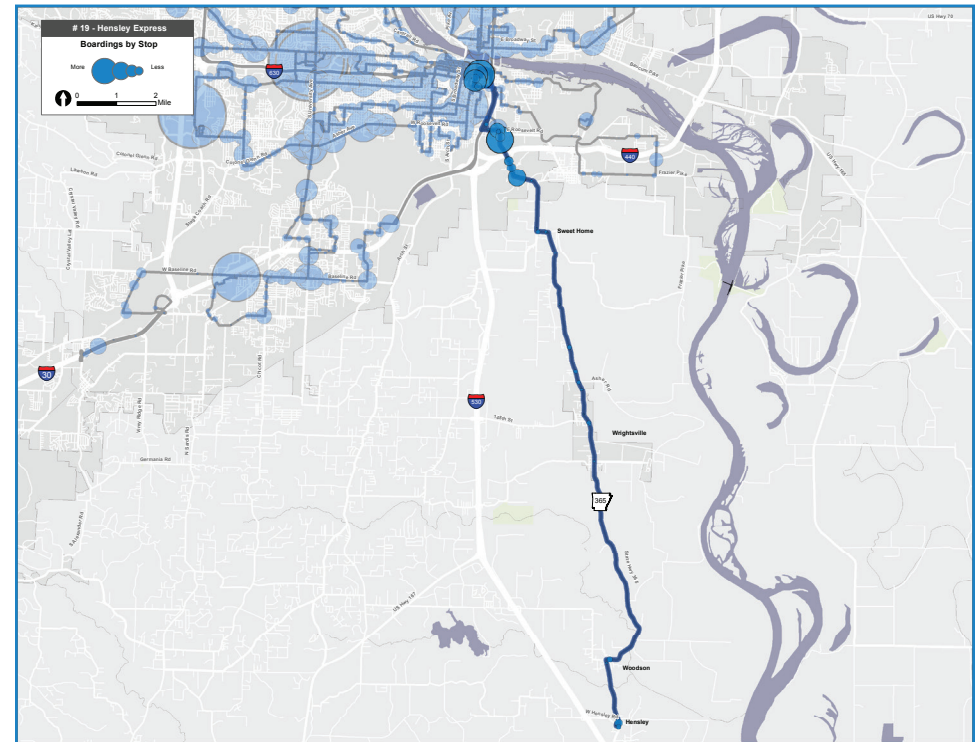
**PERFORMANCE:** Route 19's performance metrics are near the lowest in the system but are strong in comparison to other express service routes:

	Weekday		Saturday		Sunday	
	Value	Rank	Value	Rank	Value	Rank
<b>Ridership</b>	78	21	77	17	—	—
<b>Riders per Revenue Vehicle</b>	7.5	20	8.8	13	—	—
<b>Rider/Trip</b>	7.2	15	5.2	13	—	—

Weekday rank is of 25 routes; Saturday, of 21 routes; and Sunday, of 13 routes. Ridership from Nov. 1, 2016 to April 30, 2017 is represented.

**SERVICE DESIGN:**

	Value	Comment
<b>Directness (end-to-end vs. most direct route)</b>	1.0	Ranked 2nd – Very direct
<b>Average Speed (mph)</b>	26.3	Ranked 4th – Express along Hwy 365
<b>Stop Spacing (stops per mile)</b>	1.3	Ranked 3rd – Limited stop service
<b>Schedule Convenience (best headway)</b>	35	Only good for AM peak inbound
<b>Schedule Regularity</b>	Veyr Irregular	Primarily peak service with one mid-day trip



## STRENGTHS, WEAKNESSES AND OPPORTUNITIES

**STRENGTHS:**

- Provides fast and direct service between downtown Little Rock and outlying communities.
- Relatively robust schedule for a commuter route serving primarily rural communities.

**WEAKNESSES:**

- Irregular schedule that is not oriented around clockface.
- There are no park and ride lots along corridor.

**OPPORTUNITIES:**

- To increase the “capture area” of Route 19, park and ride lots should be established in the communities being served by the route. A park and ride lot in Hensley could attract commuters from points south along I-530 / US 65.