

Route 21 is a radial route that provides service along Cantrell Road to the Riverdale neighborhood. It provides connections to Episcopal Collegiate School, Walmart, Easterseals Academy at Riverdale and Riverdale Shopping Center.

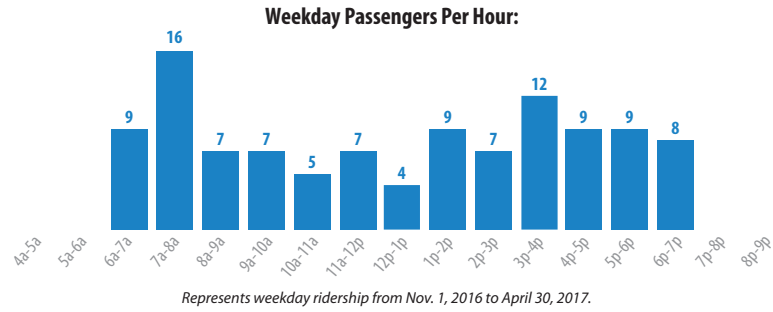


**SERVICE PATTERNS:** Route 21 operates on the same alignment for all trips. From the river Cities Travel Center, the route operates to Rebsamen Park and Riverfront, primarily along Cantrell Road, Riverfront Drive and Rebsamen Park Road.

**SCHEDULE:** Service operates on weekdays and Saturdays.

	Span of Service	Typical Headway (minutes)	One-Way Trips
<b>Weekdays</b>	6:10 a.m.-6:20 p.m.		38
Early AM	Before 6:15 a.m.	–	–
AM Peak	6:15-8:15 a.m.	40	7
Midday	8:15 a.m.-3:15 p.m.	40	21
PM Peak	3:15-6:15 p.m.	40	10
Evening/Night	6:15 p.m. and Later	–	–
<b>Saturdays</b>	6:10 a.m.-6:20 p.m.	40	38
<b>Sundays</b>	–	–	–

**RIDERSHIP:** Ridership on Route 21 is slightly above average, with 338 passengers per weekday. Ridership is steady during the peak periods, spiking from 7 to 8 a.m.



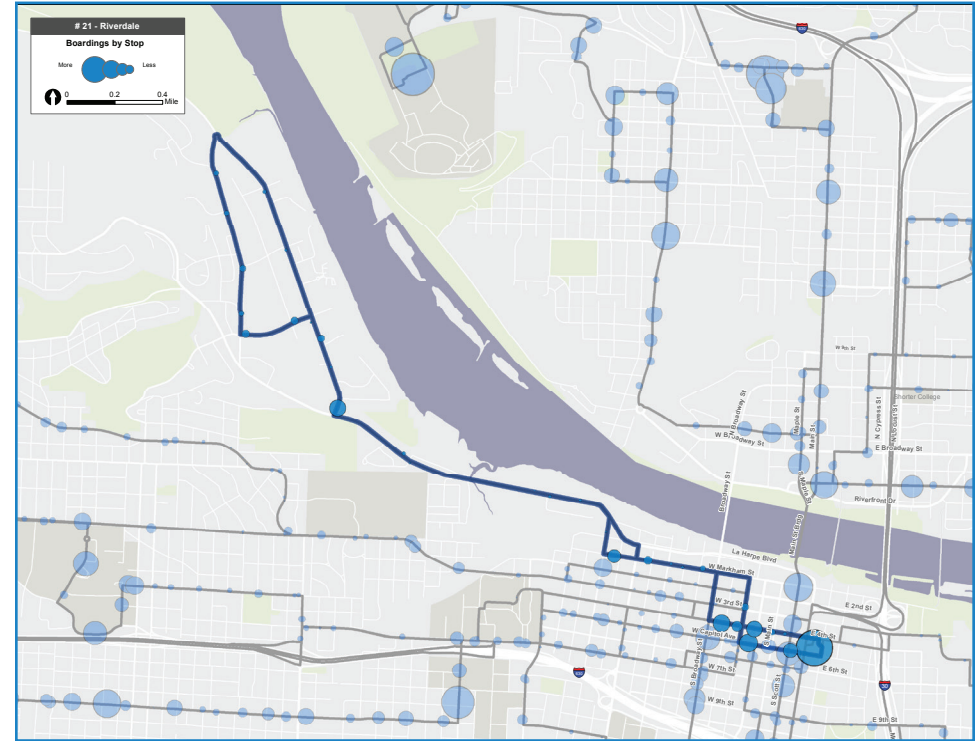
**PERFORMANCE:** Route 21 performs a little higher than average for both riders per revenue vehicle hour and riders per trip:

	Weekday		Saturday		Sunday	
	Value	Rank	Value	Rank	Value	Rank
<b>Ridership</b>	99	17	50	18	–	–
<b>Riders per Revenue Vehicle</b>	8.0	19	2.0	21	–	–
<b>Rider/Trip</b>	8.9	11	6.6	9	–	–

Weekday rank is of 25 routes; Saturday, of 21 routes; and Sunday, of 13 routes. Ridership from Nov. 1, 2016 to April 30, 2017 is represented.

**SERVICE DESIGN:**

	Value	Comment
<b>Directness (end-to-end vs. most direct route)</b>	1.1	Ranked 6th – Small terminal loop
<b>Average Speed (mph)</b>	13.6	Ranked 15th – Slightly below average
<b>Stop Spacing (stops per mile)</b>	4.8	Ranked 10th – Limited stops along Cantrell Rd.
<b>Schedule Convenience (best headway)</b>	30	Typically 40 minutes
<b>Schedule Regularity</b>	Very Regular	Consistent on weekdays and Saturday



**STRENGTHS, WEAKNESSES AND OPPORTUNITIES**

**STRENGTHS:**

- Route 21 has strong anchors and serves employment and multi-family residences.
- Service frequency is regular.

**WEAKNESSES:**

- Forty-minute headways likely limit appeal of route for potential riders.
- No Sunday service.

**OPPORTUNITIES:**

- Provide later service on weekdays to improve ridership.